

Cross section through Flywheel at BB

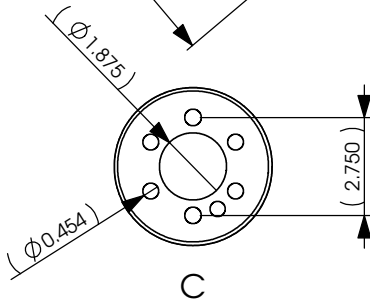
Hub Detail

ZONE		REV.	REVISIONS	DATE	APPROVED
			DESCRIPTION		

From the drawing some easy to measure dimensions are:

- \*the Overall diameter of the gear is 12.65 inches(321.3mm).
- \*the gear has 100 teeth.
- \*The hole for the crankshaft spigot is 1.875 inches(47.625mm).
- \*The surface has groove which is outside the area swept by the clutch plate, diam greater than 24mm.
- \*The bolt holes for the pressure plates. 6 bolts laid out on the clutch plate
- \*missing from the drawing is the Timing pin hole, this is located at approx 3'o'clock as you look at the front face of the flywheel, in upper left drawing.

Crankshaft Bolt Pattern.  
The dowel is exactly between the two bolt's, on the same pcd.



**PROPRIETARY AND CONFIDENTIAL**  
THE INFORMATION CONTAINED IN THIS DRAWING IS THE SOLE PROPERTY OF IntegerSpin. ANY REPRODUCTION IN PART OR AS A WHOLE WITHOUT THE WRITTEN PERMISSION OF IntegerSpin IS PROHIBITED.

		DIMENSIONS ARE IN INCHES		NAME	DATE	IntegerSpin.co.uk
		TOLERANCES:		DRAWN.	Richard	
		FRACTIONAL ±		CHECKED		Freight Rover, LDV, Sherpa Flywheel
		ANGULAR: MACH ± BEND ±		ENG APPR.		
		TWO PLACE DECIMAL ±		MFG APPR.		
		THREE PLACE DECIMAL ±		Q.A.		
		MATERIAL --		COMMENTS:		SIZE DWG. NO. REV.
NEXT ASSY	USED ON	FINISH --		The timing pin was omitted, an oversight, see note above.		
APPLICATION		DO NOT SCALE DRAWING		I will double check all dims against a flywheel, but they will be close		SCALE: 1:5 WEIGHT: SHEET 1 OF 1